

Cosmopolite - Backline List

Units	Equipment	Price
	Drums: TAMA Starclassic Maple	
1	Kick Drum 20"x18"	2000,- (The Whole kit)
1	Kick Drum 18"x15"	
1	Snare 14"x4"	
1	Tom 10"x9"	
1	Tom 12"x10"	
1	Tom 15"x13"	
1	Zildjian A Custom 14" Hi-Hat Cymbals	
1	Zildjian A Custom 16" Crash Cymbal	
1	Zildjian A Custom 20" Medium Ride Cymbal	
1	Zildjian A Custom 18" Crash Cymbal	
1	Boom Cybal stand	
	Congas:	
1	Tumba LP Classic Model 12"	400,-
1	Conga LP Classic Model 11"	400,-
1	Quinto LP Classic Model 10"	400,-
	Bongos:	
1	LP Generation 7/8"	400,-
	Bass Amps:	
	Set 1	500,-
1	AMPEG SVT CLASSIC head - with tubes	
1	AMPEG 810 cabinet - with 8x10 speakers	
	Set 2	500,-
1	AMPEG SVT 3 PRO head - transistor	
1	AMPEG 410HE cabinet - with 4x10" speakers	
1	AMPEG 15E gabinet - with 1x15" speakers	
	Guitar Amps:	
1	Fender Twin Reverb - heavy old version, with original pedal	500,-
1	Fender Hot Rod Deluxe III - with original pedal	500,-
1	VOX AC30 C"	500,-
1	Roland Jazz Chorus	500,-
	Piano including tuning	
1	YAMAHA C7 GRAND PIANO (CosmopoliteVenue)	3000,-
1	SAUTER RAGAZZA 122 upright piano (Belleville venue)	1900,-



Cosmopolite

 — SCENE OSLO —

Updated: September 2022

Cosmopolite - Sound Specifications

Units	Equipment
FOH Speakers	
8	Main PA: d&b AL09
4	Front Fills: d&b Y7P
6	Sub: d&b V-GSUB
2	Sub: d&b B2
4	Gallery fills: d&b: Max 12
FOH Speakers AMP	
5	d&b D12 - Stereo amps for the C7 and B2 speakers
2	d&b E-pac - amps for the front fills
FOH Mixer	
1	Midas Heritage D96-24
40	I/O DL251 48/16
FOH FX Rack	
1	Bricasti M7 - mono out & stereo in
1	Lexicon PCM92 - mono out & stereo in
1	Yamaha SPX - mono out & stereo in
Monitor Høyttalere	
10	d&b MAX
1	JBL EON - active monitors
Monitor Amper	
3	CROWN XLS 802 - stereo amps 500W@80hm/800W@4ohm
Monitor Speakers	
10	d&b MAX
1	JBL EON - active monitors
Monitor Speakers AMP	
3	CROWN XLS 802 - stereo amps 500W@80hm/800W@4ohm
Analog Multi	
16	Inputs
8	Returns

Cosmopolite
— SCENE OSLO —

Updated: September 2022

Cosmopolite - Monitor System

Units	Equipment	Price:
	Monitor Console	
1	Midas PRO 2C	
	Stage Rack	
1	DL 251 - fixed format	
	Split Rack	
5	Klark Teknik Square One Splitter - giving total 40 splitt channels	
	Monitor mix	
	Per production (day one of the production)	3000,-
	For productions over several days (per extra day)	1000,-

Cosmopolite
— SCENE OSLO —

Updated: January 2020

Cosmopolite Scene - Microphone List

Units	Equipment
	SHURE
8	SM 58
6	BETA 58
9	SM 57
3	BETA 57
3	SM 81
2	BETA 91
2	BETA 52A
1	KSM 9
2	KSM 32SL
	SENNHEISER
3	e603
2	e906
4	MD 421
2	MD 441U
	BEYERDYNAMIC
1	MCE 83
3	Opus 87
1	TG D57c
	AKG
2	C480
2	C414
	NEUMANN
2	KM184
	DPA
1	DPA 4011
4	DPA 4099
2	DPA 4099 HI-SPL
1	UC4099 Universal clip
1	DC4099 Double Bass clip
1	CC4099 Cello clip
2	PC4099 Piano clip
2	GC4099 Guitar clip
4	VC4099 Violine clip
2	STC4099 Brass clip
	STANDS
6	High Stands - with round foot
26	High Stands - with 3 feet
2	Short Stands - with 3 feet
16	Short Stands - with round foot

3	Keyboard "X" type Stands
8	Guitar Stands
4	Speaker Stands
	Music STANDS
6	Music Stands - heavy
6	Music Stands - medium
24	Music Stands light - with gooseneck and electric cable

Cosmopolite
— SCENE OSLO —

Updatetd: February 2020

Cosmopolite - Wireless System

Units	Equipment
	Shure Wireless System
2	WL BETA 58A - UR2 Transmitter
1	WL Head Microphone - UR1 Transmitter
1	SHURE UR4 Dual Wireless Receiver - giving two channels of wireless signals

Cosmopolite
— SCENE OSLO —

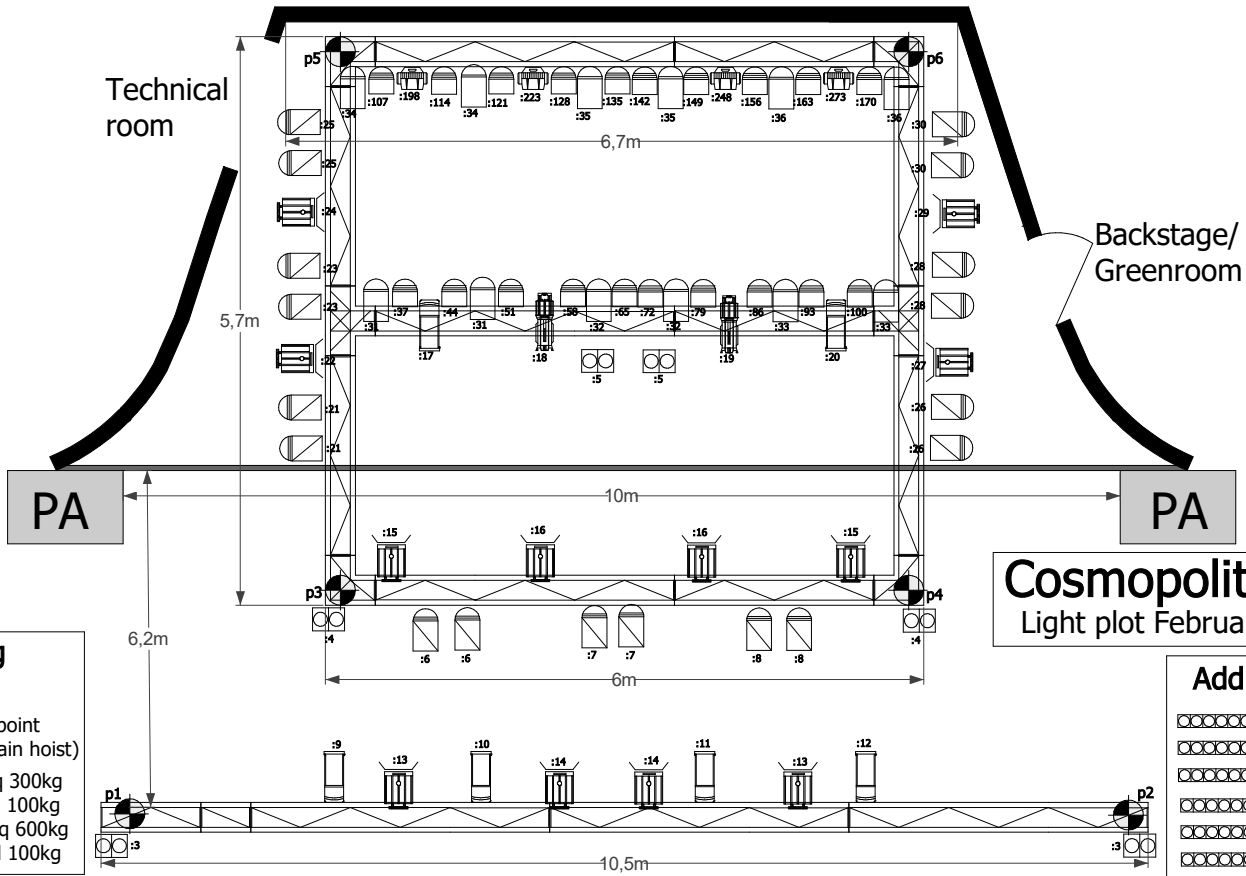
Updated: January 2020

Cosmopolite - Light Specifications

Units	Equipment
	FHO Console
1	MA grandMA3 compact
	Dimmers
36	AVABCAC DD 16A
6	Alternatin curret Outlets
	Lamps
	Dimmers
1	Strand Light Predule 16°/30°, 650W
2	ETC S4 Zoom profil 15°/30°, 750W
2	Marq Lighting Gesture Beam 500
4	Floor PAR 64, CP88, 500W
6	Selecon SPX 26°, 800W
6	DTS Blinder Flash 2000L, 1300W
6	Showtec Sunstrip Active DMX, 750W
12	Selecon Rama Fresnel, 1000W
18	PARCAN 64, CP88, 500W
20	PARCAN 64, CP 62, 1000W
	LEDS
4	Martin, MAC Aura XB
24	Martin, RUSH PAR 1 RGBW
	Smoke Machine
1	Martin, JEM K1 HAZER
	Rigg
1	Front Truss: 10,5m long. Pq 300kg, Pl 100kg
1	Square rig above the stage: 6m x 5,7m. Pq 600kg, Pl 100kg

Cosmopolite
— SCENE OSLO —

Updated: September 2022



Cosmopolite scene
Light plot February 2022

Rigging

Supportingpoint
(electric chain hoist)

p1, p2 - Pq 300kg
PI 100kg

p3, p4, - Pq 600kg
PI 100kg

p5, p6 PI 100kg

Additional lights

- ⊖ :300
- ⊖ :310
- ⊖ :320
- ⊖ :330
- ⊖ :340
- ⊖ :350
- ⊖ :177
- ⊖ :184
- ⊖ :191
- ⊖ :296

Legend (18pcs) ⊖ PAR 64 500W (12pcs) ⊖ PAR 64 1000W (3pcs) ⊖ FLOORCAN 1000W (23pcs) ⊖ RUSH PAR 1 RGBW 7Ch Mode (6pcs) ⊖ 2-lights (6pcs) ⊖ Showtec Sunstrip Active 10 dim (6pcs) ⊖ Selecon SPX Profil 26° 800W (2pcs) ⊖ Source Four Profil 15°/30° 750W (1pcs) ⊖ JEM K1 Hazer (12pcs) ⊖ Selecon Rama 150 Fresnel 1000W (4pcs) ⊖ MAC Aura XB Extd Mode :123 DMX address

Cosmopolite - AV Spesifications

	Equipment	Price: 1500,-
	Projector	
Type:	Barco G60-W10 DLP laser phosphor projector	
Resolution:	1,920 x 1,200 (WUXGA)	
Brightness:	10,000 Lumens	
Contrast ratio:	1200: 1 sekvensiell; 6000: 1 dynamisk; Ekstrem svart: 100.000: 1	
Connection to projector:	2xHDMI, DVI-D, HDBaseT, 3G-SDI, VGA	
Connection in venue:	VGA, HDMI	
Input resolutions:	Up to 1,920 x 1,200 @ 60Hz	
Dimensions:	(WxLxH) without feet: 484 x 529 x 195 mm / 19.06 x 20.83 x 7.68 inches	
Weight:	Weight without lens: 22.7 kg / 50.1 lbs	
	Screen	
Screen type:	Front projection screen	
Format:	16:09	
	Distance	
1,6m:	From stage floor to lower edge of the screen	
17m:	From projector to screen	

Cosmopolite
— SCENE OSLO —

Updated: September 2022

